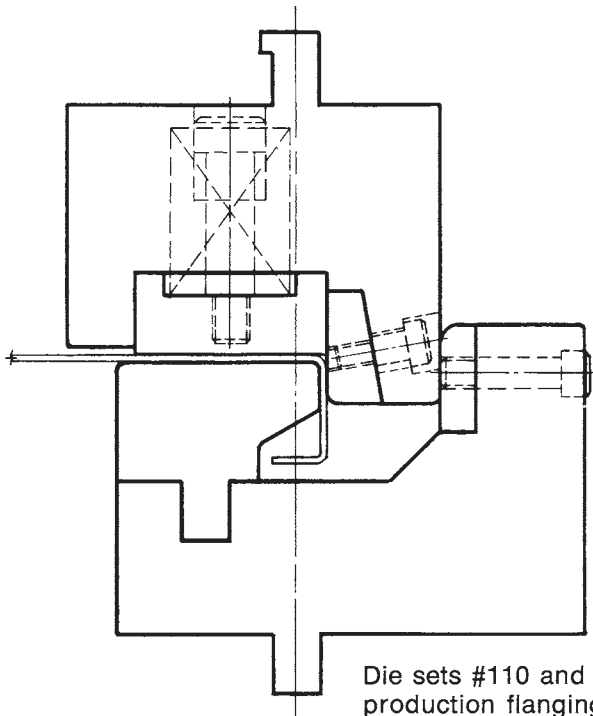


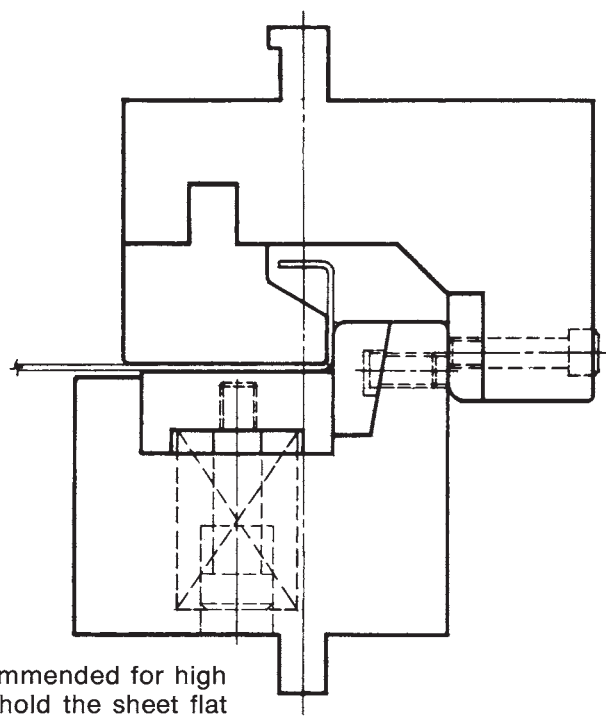
# WIPING DIES



### SET 110

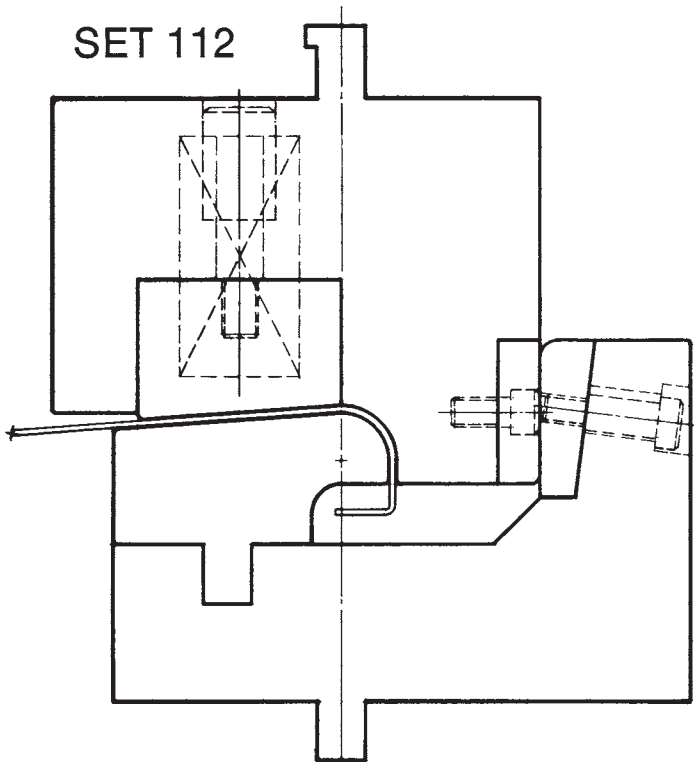


### SET 111



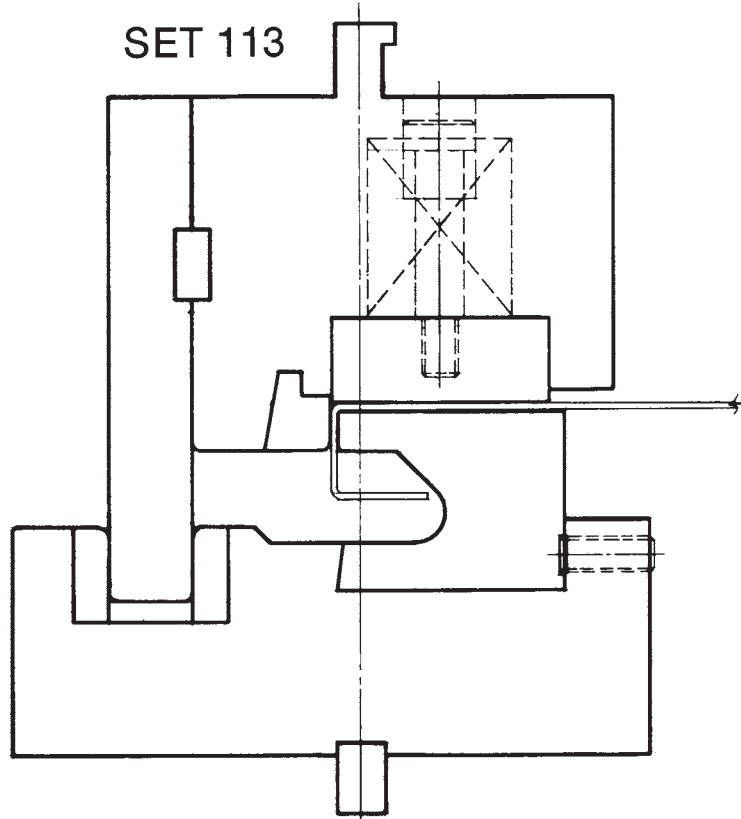
Die sets #110 and #111 are recommended for high production flanging. These dies hold the sheet flat while wiping a 90° flange either up or down. Back gauging can be fitted to suit. 16 ga. max. capacity.

### SET 112



For wiping a radius on the edge of a sheet, die set #112 is recommended. Overbend allowance is built into die set to compensate for spring-back. 16 ga. max. capacity.

### SET 113



For forming closed flanged forms die set #113 is used.