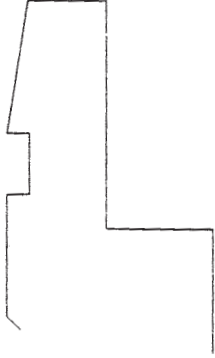


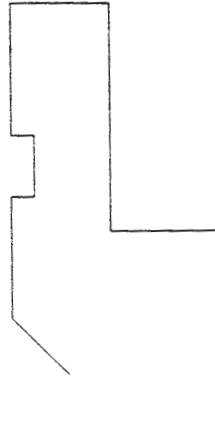


## EUROPEAN STYLE TOOLING

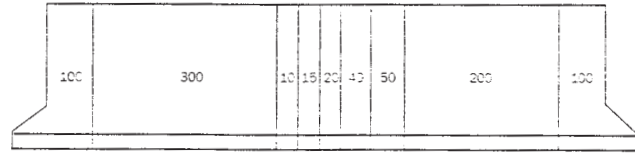
Quick Release  
Clamping Style



Standard  
Safety Tang

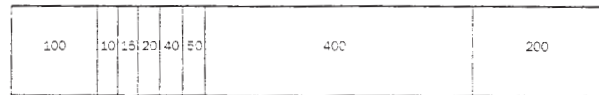


### SECTIONALIZED PUNCH WIDTHS-835MM



3.937" (100mm), 11.811" (300mm), .394" (10mm),  
.591" (15mm), .787" (20mm), 1.575" (40mm),  
1.969" (50mm), 7.874" (200mm), 3.937" (100mm).

### SECTIONALIZED DIE WIDTHS-835MM



3.937" (100mm), .394" (10mm), .591" (15mm),  
.787" (20mm), 1.575" (40mm), 1.969" (50mm),  
15.75" (400mm), 7.874" (200mm).

### Riteway Brake Dies Precision Planned European Tooling

#### Features Benefits

- All punches come standard with a safety tongue
- Reduced set-up time
- All punches and dies are manufactured from our industry proven Dura-Tuf alloy steel. High quality chrome-carbon die steel.

- All punches and dies can be flame hardened to 55-57 Rockwell C-Scale.
- All Tools are Precision Planned to a tolerance in critical areas of  $\pm .002$ .
- To maintain total quality control and a quick delivery time, all of our tools are manufactured and stocked in our own state of the art press brake tooling facility.