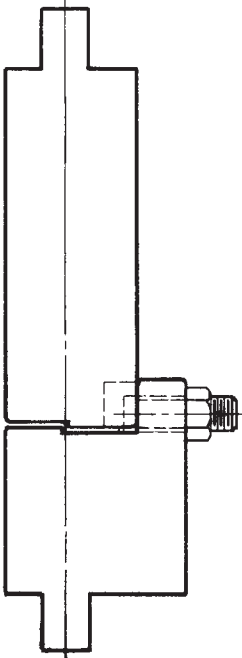


OFFSET AND JOGGLE DIES

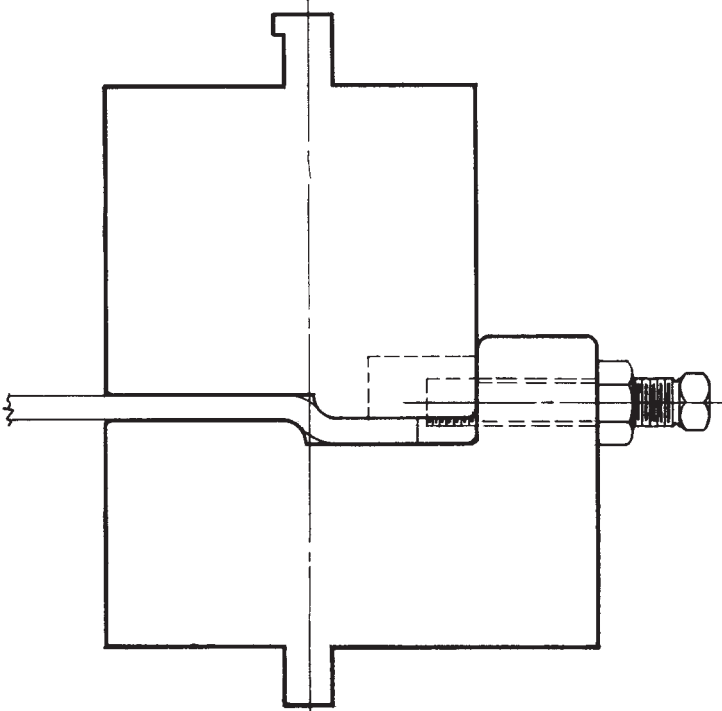


SET 84



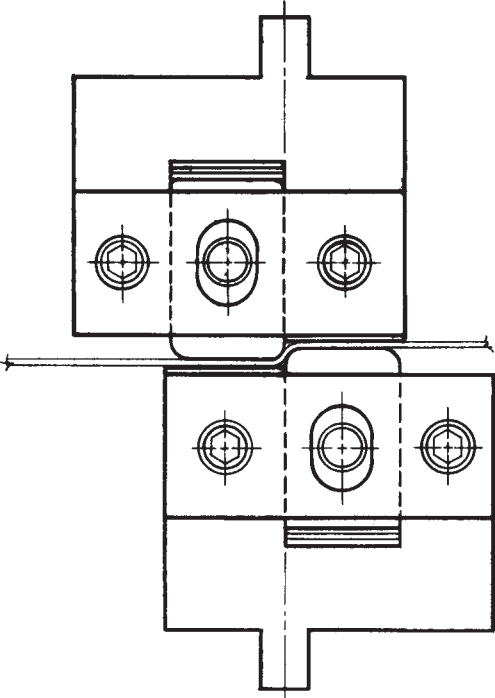
For forming metal thickness offsets, best results are obtained in die set #84. Dies have a back-up leader to reduce material spreading.

SET 85



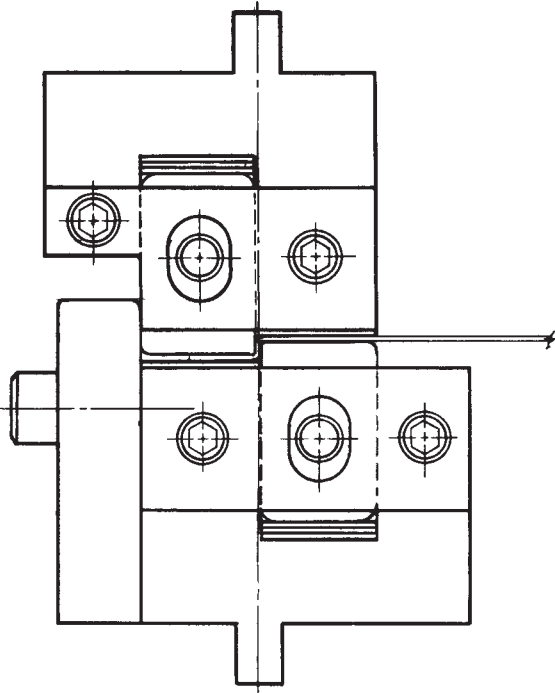
Die set #85 is recommended on heavier gauge stock for open angle offset.

SET 86



Open angle offsets adjustable to 5/16" can be obtained in die set #86. Shimming behind reversible blocks changes depth of offset. Rotation of blocks changes the radius. Each corner has a different radius to allow for various material thickness.

SET 87



If the offset is 1" or less from the edge, set #87 can be used. Dies have a back-up leader so minimized spreading and sharper offsets will result.